

STATE OF ARKANSAS
STATE HIGHWAY COMMISSION

FED. DIST.	STATE	FED. AID PROJ. NO.	FISCAL YEAR	SHEET NO.	TOTAL SHEETS
6	ARK.	276-A	1931	1	2

Re-opened

FISCAL YEAR	JOB NO.	SHEET NO.	TOTAL SHEETS
1931	10-179	1	2

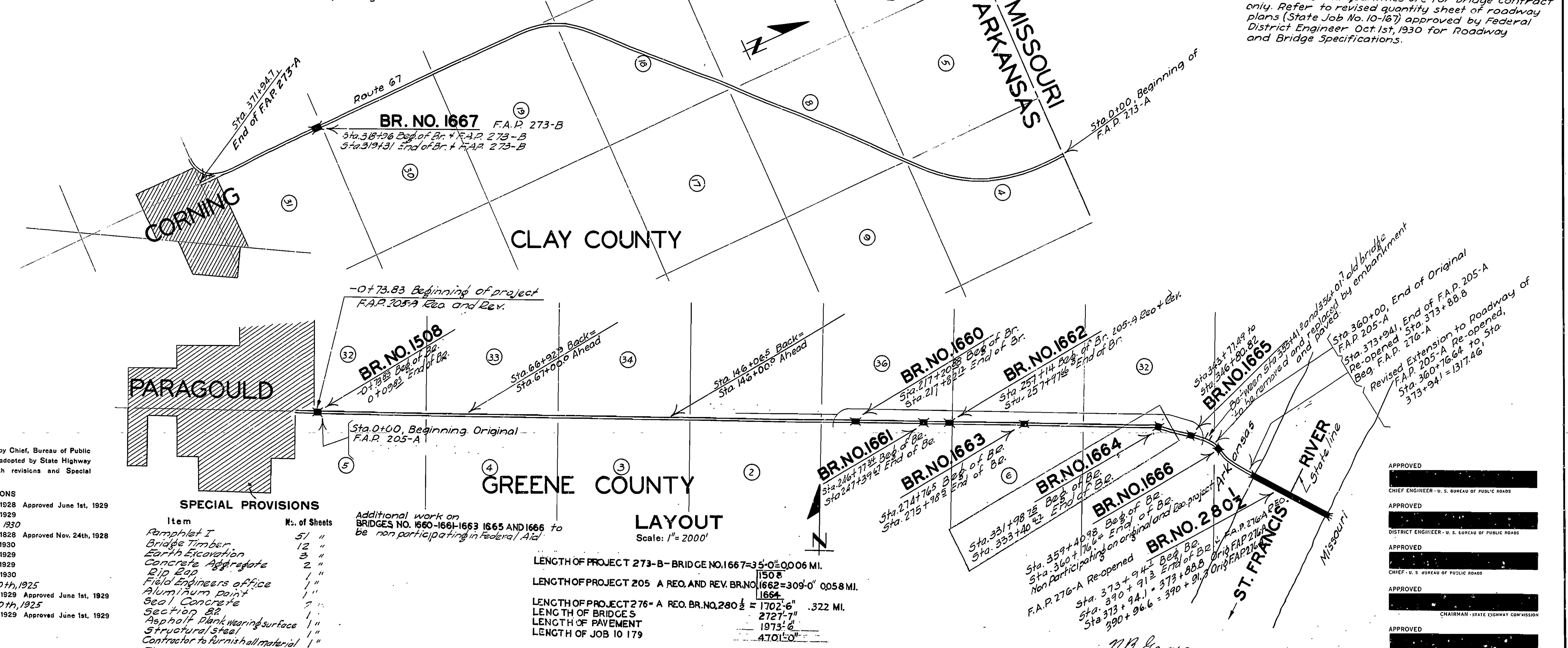
INDEX OF SHEETS

Drawg. No.	Job No.	Sheet No.	Description
3116	10-179	1	Title sheet
3117	10-179	2	Layout Br. #1667
3118	10-179	3	Details Abutment Br. #1667
2355	10-179	4	Details 35' C.C.D. 27' Railway. Br. #1667
3119	10-179	5	Layout Br. #1508
3120	10-179	6	Abutment Details Br. #1508 + 1662
2413	10-179	7	Details 80'-0" Low Truss Brs. #1508
3121	10-179	8	Layout Br. #1660
3122	10-179	9	Details Superstructure Br. #1660-1661
3123	10-179	10	Layout Br. #1661
3124	10-179	11	Layout Br. #1662
3125	10-179	12	Detail Abut. No. 1
3126	10-179	13	Details Abut. No. 1
3127	10-179	14	Layout Br. No. 1663
3128	10-179	15	Layout Br. No. 1664
3129	10-179	16	Details of Piers + Bents Br. No. 1664
2272	10-179	17	Details 30' C.C.D. 20' Railway. Br. No. 1664
3130	10-179	18	Layout Br. No. 1665
3131	10-179	19	Layout Br. No. 1666
3132	10-179	20	Layout Br. No. 2802
(Special)	10-179	21	Special approach slab.
W.S. 3A	10-179	22	Curve widening
W.S. 3A	10-179	23	Curve super-elevation
C.P. 10	10-179	24	Standard 18' Bates pavement
9A	10-179	12A	Detail Abutment No. 2 Bridge #1662
10A	10-179	13A	Detail 80'-0" thru plate girder

PLAN OF PROPOSED BRIDGES
ON PARAGOULD-EAST &
NORTH OF CORNING ROADS
GREENE & CLAY COUNTIES

ROUTE 25 SEC. 9
67 22
JOB NO 10-179

FEDERAL AID PROJECT NO. 205 A REO. AND REV. 276 A REO 273 B



QUANTITIES

Item No.	Item	Unit	Job 10-179	F.A.D. 205-A	F.A.D. 276-A	F.A.P. 273-B
* 52.12	Earth Excavation	Cu. Yds.	1,347			
13	Dry Excavation for structures	Cu. Yds.	1,648	102	1,499	
47	Portland Cement Concrete Pavement	Sq. Yds.	4,320.26	331	2,708.1	
S.P. 452	Treated Bridge Timber	M. F.B.M.	32,887			
S.P. 452	Untreated Timber Piling	Lin. Ft.	6,070	900	5,170	
S.P. 452	Treated Timber Piling	Lin. Ft.	1,180			
54	Class "A" Concrete	Cu. Yds.	704.89	109.28	595.61	
S.P. 452	Class "B" Concrete	Cu. Yds.	547.66	45.28	216.78	
S.P. 452	Class "C" Concrete	Cu. Yds.	228.37	3.795	190.37	
55	Reinforcing steel	Lbs.	202,249	21,928	120,557	
56	Structural steel in Truss Bridges	Lbs.	195,100		195,100	
* 32	36" Corrugated Metal Pipe	Lin. Ft.	22'-0"			
S.P. 469	2" Cap 12" thick	Cu. Yds.	80		80	
72	Concrete Rolling for structures	Lin. Ft.	230.4	71	159.4	
* 57	Remove and Recondition existing structures	Lump Sum	3,776			
S.P. & 24	1 1/2" Asphalt Plank	Sq. Yds.	3,776			
* 58	Fine Grading	Sq. Yds.	3,958.4		2,368.0	3,776

* Indicates item is non-participating in Federal Aid Federal Aid Markers of approved design are to be furnished to contractor by State, and are to be placed at beginning and end of bridges.

Note: Above items and quantities are for bridge contract only. Refer to revised quantity sheet of roadway plans (State Job No. 10-167) approved by Federal District Engineer Oct. 1st, 1930 for Roadway and Bridge Specifications.

Specifications approved by Chief, Bureau of Public Roads, September 28, 1925, and adopted by State Highway Commission May 30, 1925 with revisions and Special Provisions as follows:

REVISIONS

Pamphlet A	Revised Sept. 1st, 1928	Approved June 1st, 1929
B	Revised Nov. 1st, 1929	
C	Revised July 1st, 1930	
D	Revised July 1st, 1928	Approved Nov. 24th, 1928
E	Revised Jan. 1st, 1930	
F	Revised Aug. 1st, 1929	
G	Revised June 1st, 1929	
H	Revised Jan. 1st, 1930	
I	Revised May 30th, 1925	
J	Revised Jan. 1st, 1929	Approved June 1st, 1929
K	Revised May 30th, 1925	
L	Revised Jan. 1st, 1929	Approved June 1st, 1929

SPECIAL PROVISIONS

Item	No. of Sheets
Pamphlet I	51
Bridge Timber	12
Earth Excavation	3
Concrete Aggregate	2
2 1/2" Cap	1
Field Engineers office	1
Aluminum Paint	1
Seal Concrete	1
Section Br.	1
Asphalt Plank wearing surface	1
Structural steel	1
Contractor to furnish all material	1
Fine grading	1
Reconditioning of existing struct.	1

Additional work on BRIDGES NO. 1660-1661-1663-1665 AND 1666 to be non-participating in Federal Aid.

LAYOUT
Scale: 1" = 2000'

LENGTH OF PROJECT 273-B - BRIDGE NO. 1667 = 35'-0" ± 0.006 MI.
1508

LENGTH OF PROJECT 205 A REO. AND REV. BR. NO. 1662 = 309'-0" ± 0.058 MI.
1664

LENGTH OF PROJECT 276-A REO. BR. NO. 2802 = 1702'-6" ± .322 MI.

LENGTH OF BRIDGES = 2727'-7"

LENGTH OF PAVEMENT = 1973'-6"

LENGTH OF JOB 10 179 = 4701'-0"

APPROVED

CHIEF ENGINEER - U. S. BUREAU OF PUBLIC ROADS

APPROVED

DISTRICT ENGINEER - U. S. BUREAU OF PUBLIC ROADS

APPROVED

CHIEF - U. S. BUREAU OF PUBLIC ROADS

APPROVED

CHAIRMAN - STATE HIGHWAY COMMISSION

APPROVED

STATE HIGHWAY ENGINEER

BRIDGE ENGINEER

BRIDGES NO. 1508, 2802, 1660 to 1667, incl. DRAWING NO. 3116

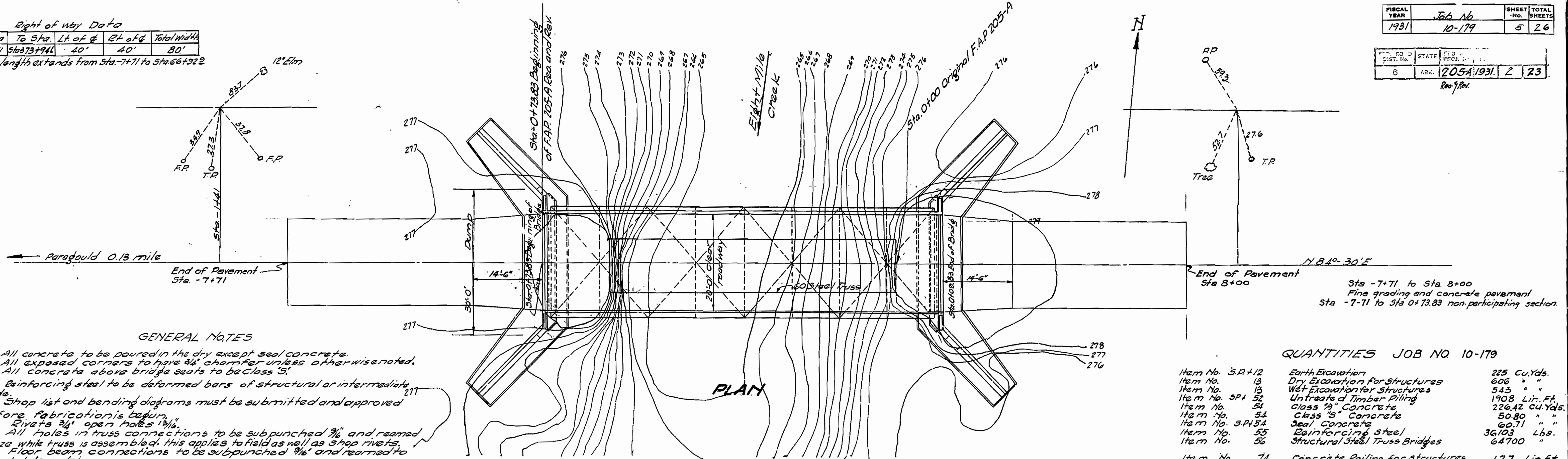
Right of way Data

From Sta	To Sta	Lt of C	Rt of C	Total Width
Sta. 7+71	Sta. 7+94	40'	40'	80'

Tangent length extends from Sta. 7+71 to Sta. 6+32.2

FISCAL YEAR	1931	JOB NO.	10-179	SHEET NO.	5	TOTAL SHEETS	26
PROJ. NO.	6	STATE	ARK.	FILE NO.	205A/1931	2	23

Rev. 1/2/31



GENERAL NOTES

All concrete to be poured in the dry except seal concrete.
 All exposed corners to have 3/4" chamfer unless otherwise noted.
 All concrete above bridge seats to be Class "S".
 Reinforcing steel to be deformed bars of structural or intermediate grade.
 Shop list and bending diagrams must be submitted and approved before fabrication is begun.
 Rivets 3/4" open holes 1 1/4".
 All holes in truss connections to be subpunched 3/8" and reamed to size while truss is assembled. This applies to field as well as shop rivets.
 Floor beam connections to be subpunched 3/8" and reamed to a metal template.
 All field connections shall be riveted.
 Shop paint: After being completely assembled and shop work finished, all pieces shall be given one coat of red lead paint and raw linseed oil before shipment.
 Field paint: Structural steel to be given one coat of white lead with 20% sublimed blue lead paint as per Standard Specifications. Second coat shall be aluminum paint as per Special Provisions.
 All field rivets and marred places of shop paint are to be spot painted with red lead and raw linseed oil before first field coat is applied.
 All floor beams to be milled to exact length after framing angles have been riveted.
 Shapes of equal or greater strength may be substituted for structural shapes shown; payment, however, will be made in accordance with sizes given on this plan.
 Roadway drains to be paid for at unit prices bid for structural steel.
 Lengths of piling shown are assumed for estimating quantities only. Actual lengths to be determined in the field.
 Volume occupied by embedded pile heads not included in pay quantity of concrete in footings.
 Specifications: Arkansas Standard Road and Bridge Specifications adopted May 30th, 1925 and revised.
 Bridge Contractor to remove old bridge.
 Bridge Contractor to complete embankment.
 For details see drawing No. 2413 + 3120

PLAN

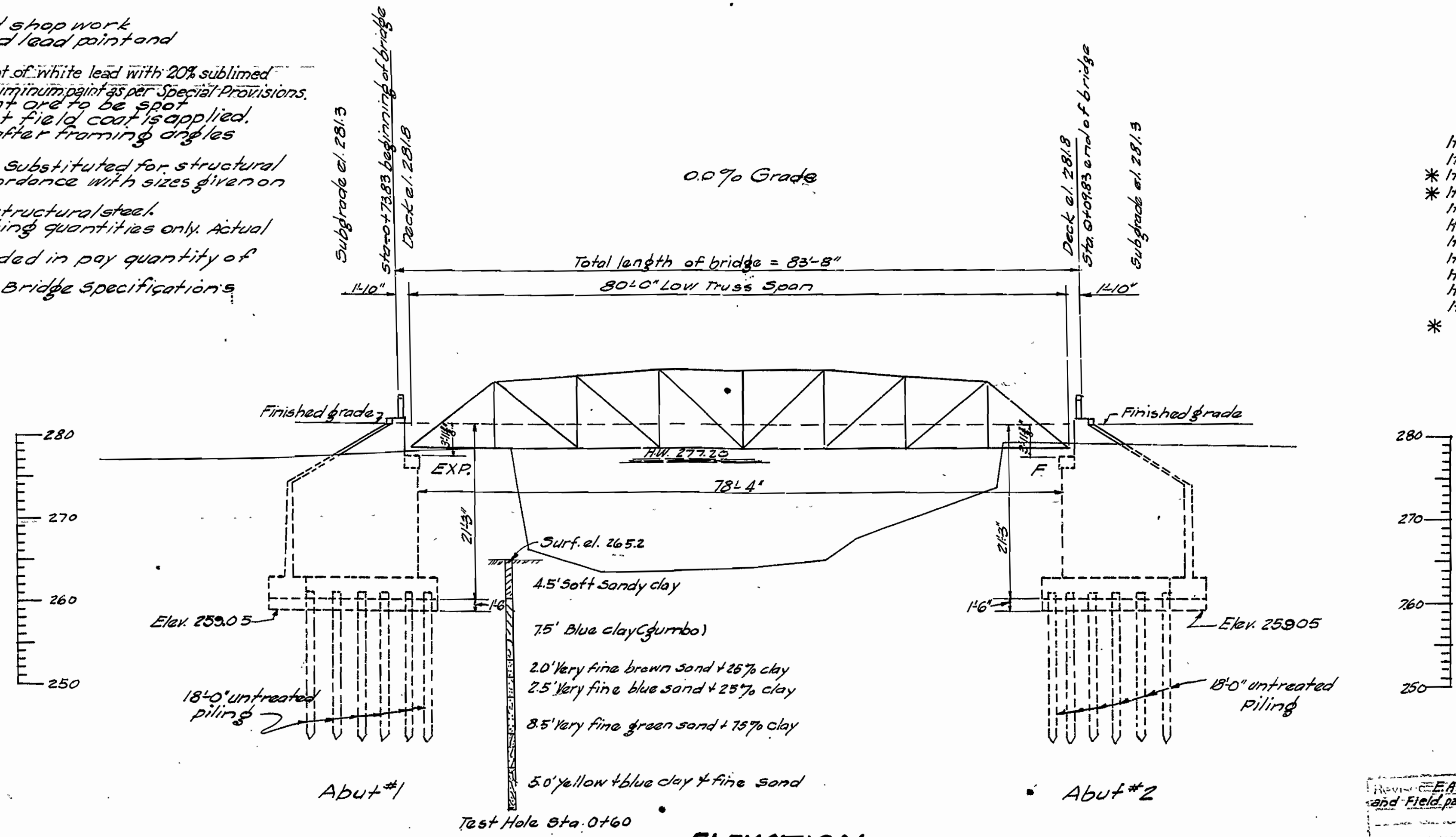
QUANTITIES JOB NO 10-179

Item No. S.P. 12	Earth Excavation	225 Cu. Yds.
Item No. 13	Dry Excavation for Structures	606 " "
Item No. 13	Wet Excavation for Structures	543 " "
Item No. S.P. 52	Untreated Timber Piling	1908 Lin. Ft.
Item No. 54	Class "A" Concrete	226.42 Cu. Yds.
Item No. 54	Class "S" Concrete	50.80 " "
Item No. S.P. 54	Seal Concrete	60.71 " "
Item No. 55	Reinforcing steel	36,103 Lbs.
Item No. 56	Structural Steel Truss Bridges	64,700 " "
Item No. 74	Concrete railing for structures	12.7 Lin. Ft.
Item No. S.P.	Removal of existing structure	Lump Sum
Item No. S.P. 47	Concrete pavement	3018.10 Sq. Yd.
Item No. S.P. 24	Fine grading	2974.68 " "

QUANTITIES F.A.P. 205 A REOPENED & REVISED

Item No. 13	Dry excavation for structures	606 Cu. Yds.
Item No. 13	Wet excavation for structures	543 Cu. Yds.
* Item No. S.P. 24	Fine grading	1581 Sq. Yds.
* Item No. 47	Concrete pavement	1602.05 Sq. Yds.
Item No. S.P. 52	Untreated timber piling	1908 Lin. Ft.
Item No. 54	Class "A" concrete	226.42 Cu. Yds.
Item No. 54	Class "S" concrete	50.80 Cu. Yds.
Item No. S.P. 54	Seal concrete	60.71 Cu. Yds.
Item No. 55	Reinforcing steel (* 698# Roadway)	35,405 Lbs.
Item No. 56	Structural steel (Truss bridges)	64,700 Lbs.
Item No. 74	Concrete railing for structures	12.70 Lin. Ft.

* Roadway quantities



ELEVATION

LAYOUT
BRIDGE OVER EIGHT MILE CREEK
PARAGOULD EAST ROAD
GREENE COUNTY
ROUTE 25 SEC. 9

ARKANSAS STATE HIGHWAY COMMISSION
 LITTLE ROCK, ARK.
 Drawn By: FRB Date: 2-17-31
 Traced By: MKW Date: 2-21-31
 Checked By: _____ Date: _____
 BRIDGE NO. 1508 DRAWING NO. 3119

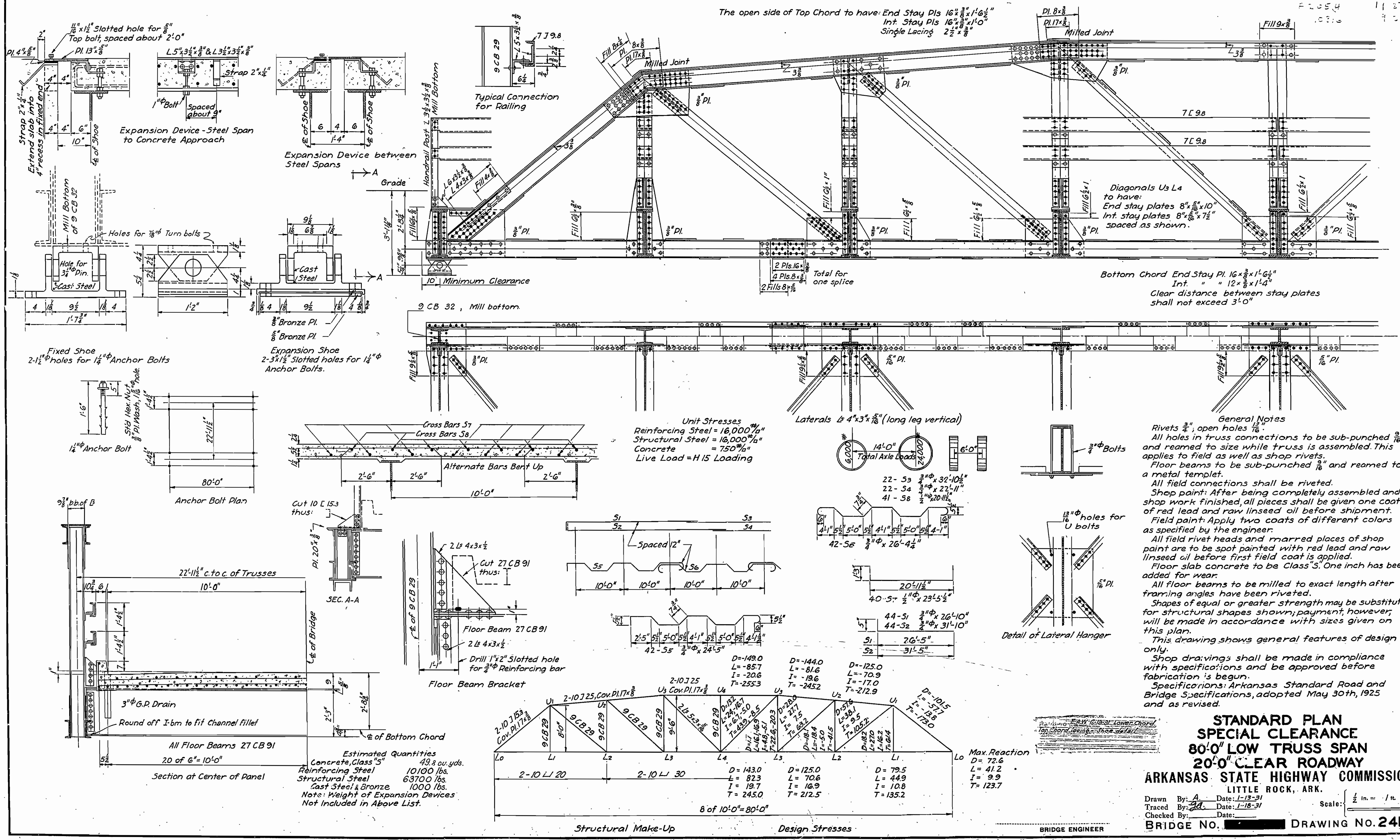
Check E.A.W. & K.S. Dimensions and Field paint notes.

M.B. Sawyer
 BRIDGE ENGINEER

B.M. #1 elev. 278.50
 on north end of east wing wall of steel bridge

Scale: 1/4" = 10' ft.

FISCAL YEAR	1925	SHEET No.	7	TOTAL SHEETS	26
-------------	------	-----------	---	--------------	----



General Notes

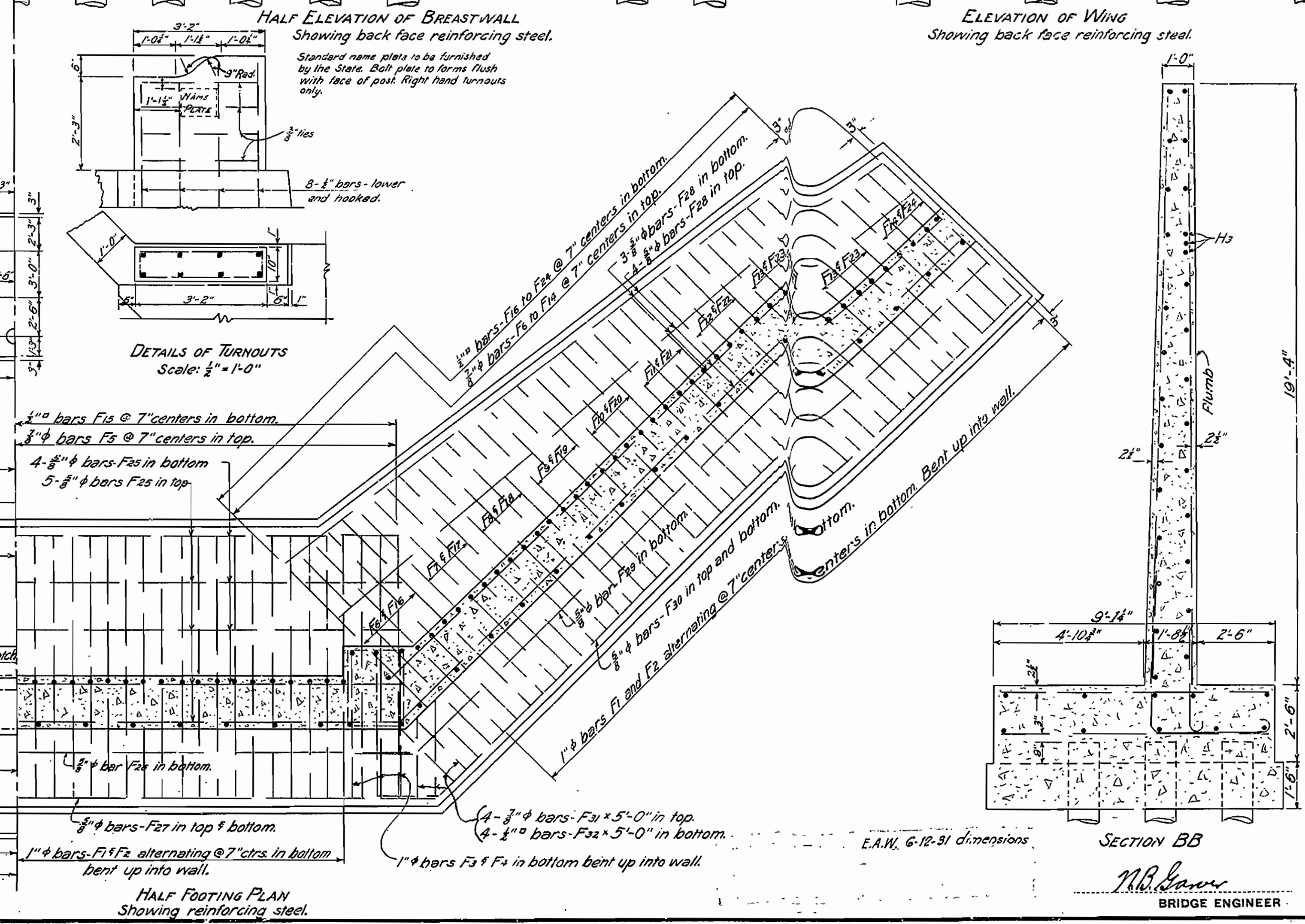
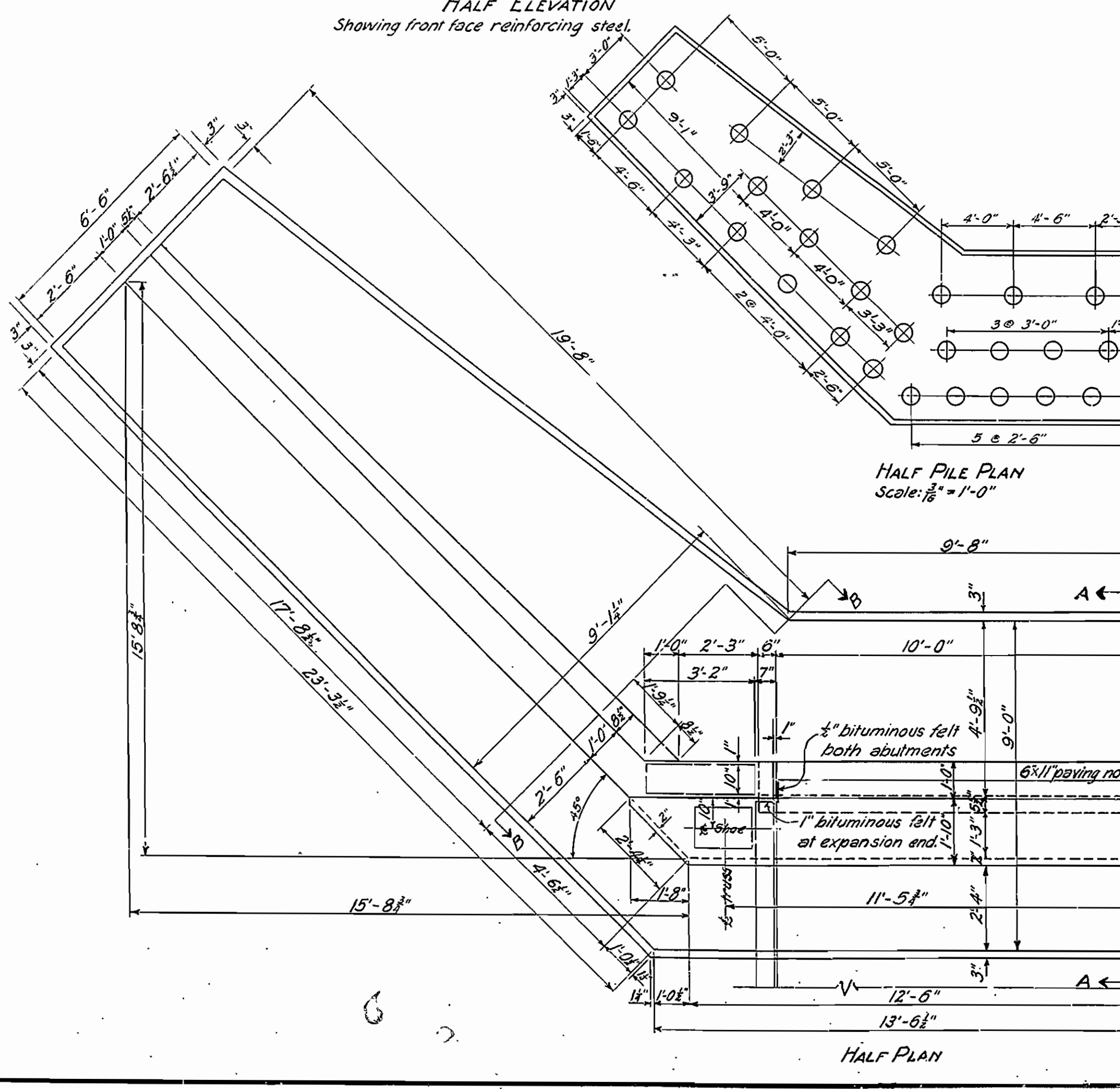
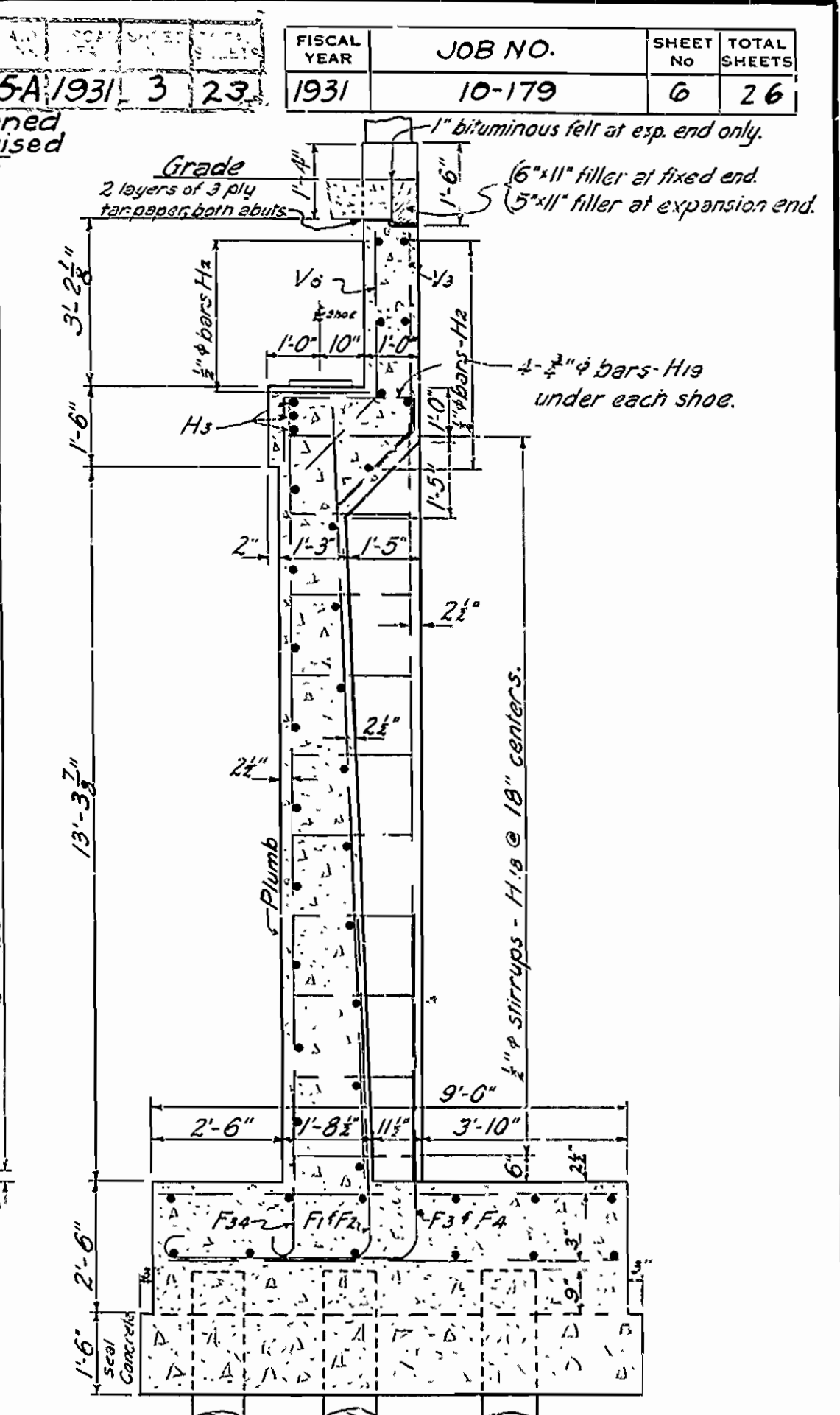
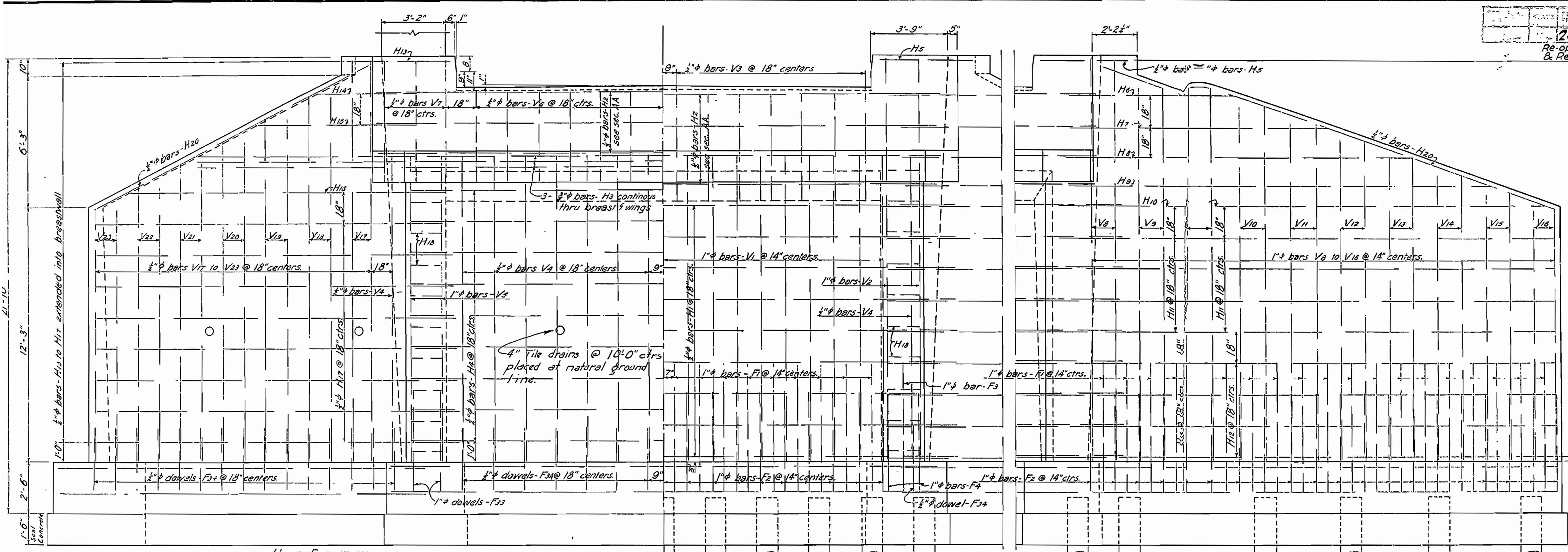
Rivets $\frac{3}{4}$ " open holes $\frac{1}{8}$ ".
 All holes in truss connections to be sub-punched $\frac{3}{16}$ " and reamed to size while truss is assembled. This applies to field as well as shop rivets.
 Floor beams to be sub-punched $\frac{3}{16}$ " and reamed to a metal template.
 All field connections shall be riveted.
 Shop paint: After being completely assembled and shop work finished, all pieces shall be given one coat of red lead and raw linseed oil before shipment.
 Field paint: Apply two coats of different colors as specified by the engineer.
 All field rivet heads and marred places of shop paint are to be spot painted with red lead and raw linseed oil before first field coat is applied.
 Floor slab concrete to be Class "S". One inch has been added for wear.
 All floor beams to be milled to exact length after framing angles have been riveted.
 Shapes of equal or greater strength may be substituted for structural shapes shown; payment, however, will be made in accordance with sizes given on this plan.
 This drawing shows general features of design only.
 Shop drawings shall be made in compliance with specifications and be approved before fabrication is begun.
 Specifications: Arkansas Standard Road and Bridge Specifications, adopted May 30th, 1925 and as revised.

**STANDARD PLAN
 SPECIAL CLEARANCE
 80'-0" LOW TRUSS SPAN
 20'-0" CLEAR ROADWAY
 ARKANSAS STATE HIGHWAY COMMISSION
 LITTLE ROCK, ARK.**

Max. Reaction
 D = 72.6
 L = 41.2
 I = 9.9
 T = 123.7

Drawn By: A Date: 1-13-31
 Traced By: J Date: 1-18-31
 Checked By: Date:
 BRIDGE NO. [] DRAWING NO. 2413

Scale: $\frac{1}{2}$ in. = 1 ft.



BAR SIZE	LENGTH	A	B	BENDING DIAGRAM
F1	10'-8"	3'-9"	6'-2"	
F2	9'-4"	3'-9"	4'-10"	
F3	11'-7"	4'-8"	6'-2"	
F4	10'-3"	4'-8"	4'-10"	
F20	24'-4"	22'-4"	2'-0"	
F30	24'-9"	22'-9"	2'-0"	
H4	5'-3"	1'-9"	3'-6"	
H6	6'-1"	4'-1"	2'-0"	
H7	10'-3"	8'-3"	2'-0"	
H8	14'-6"	12'-6"	2'-0"	
H9	18'-3"	16'-3"	2'-0"	
H10	21'-6"	19'-0"	2'-6"	
H11	22'-1"	19'-10"	2'-3"	
H12	22'-0"	20'-0"	2'-0"	
H13	5'-6"	1'-9"	2'-9"	
H14	6'-0"	4'-0"	2'-0"	
H15	10'-2"	8'-2"	2'-0"	
H16	21'-8"	19'-8"	2'-0"	
H17	24'-0"	22'-0"	2'-0"	
V3	5'-8"	3'-8"	2'-0"	
V6	5'-1"	3'-1"	2'-0"	
H1	30'-0"	24'-0"	3'-0"	
H3	54'-3"	24'-9"	14'-9"	
H18	8'-8"			
H19	5'-7"			
F33	6'-10"	4'-10"	8"	
F34	3'-8"	3'-2"	4"	

DETAILS OF ABUTMENTS 1 & 2, BR. NO. 1508

PARAGOULD - EAST ROAD
 GREENE COUNTY
 ROUTE 25, SEC. 9

ARKANSAS STATE HIGHWAY COMMISSION
 LITTLE ROCK, ARK.

Drawn By: FRB Date: 2-23-31
 Traced By: WTB Date: 2-27-31
 Checked By: _____ Date: _____

Scale: 1/4" = 1'-0"
 and as noted

BRIDGE NO. 1508 **DRAWING NO. 3120**

N.B. Law
 BRIDGE ENGINEER